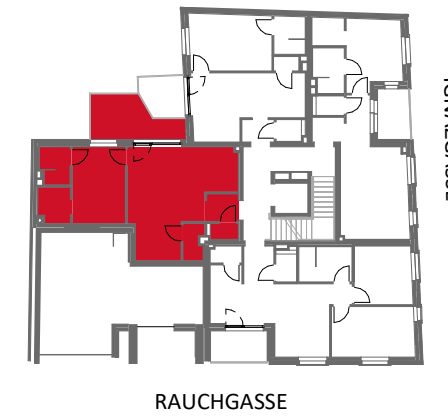




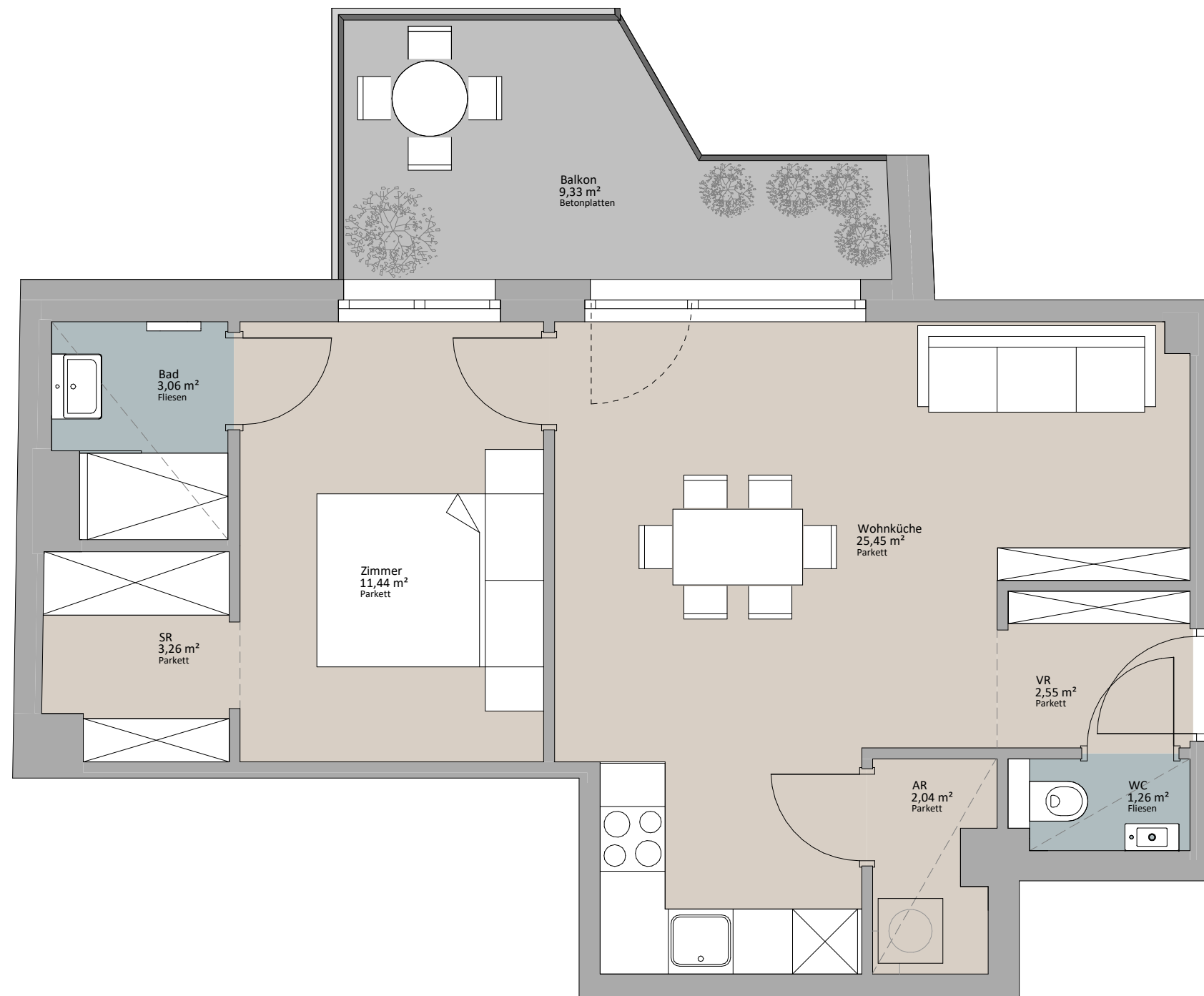
Rustler Immobilienreuehand GmbH  
Mariahilfer Straße 196, 1150 Wien  
Tel.: +43 (1) 894 97 49  
E.: office@makler.rustler.eu

LAGEPLAN



IGNAZGASSE

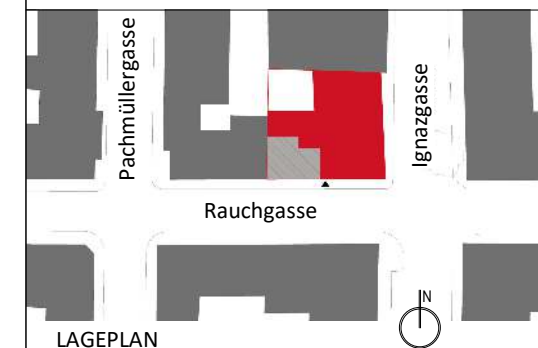
RAUCHGASSE



TOP 14

**3. Obergeschoss TOP 14**

Zimmer	11,44 m <sup>2</sup>
Wohnküche	25,45 m <sup>2</sup>
WC	1,26 m <sup>2</sup>
VR	2,55 m <sup>2</sup>
SR	3,26 m <sup>2</sup>
Bad	3,06 m <sup>2</sup>
AR	2,04 m <sup>2</sup>
	49,06 m <sup>2</sup>
Balkon	9,33 m <sup>2</sup>
	9,33 m <sup>2</sup>



LAGEPLAN

