



Rustler Immobilienreuehand GmbH
Mariahilfer Straße 196, 1150 Wien
Tel.: +43 (1) 894 97 49
E.: office@makler.rustler.eu

LAGEPLAN

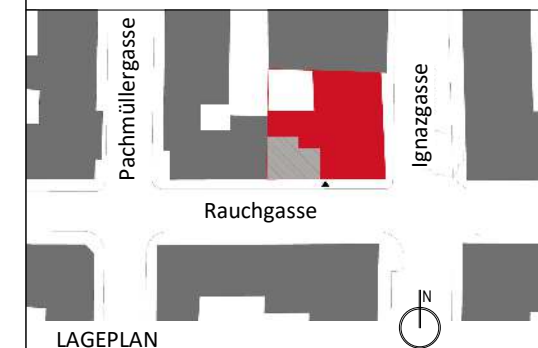
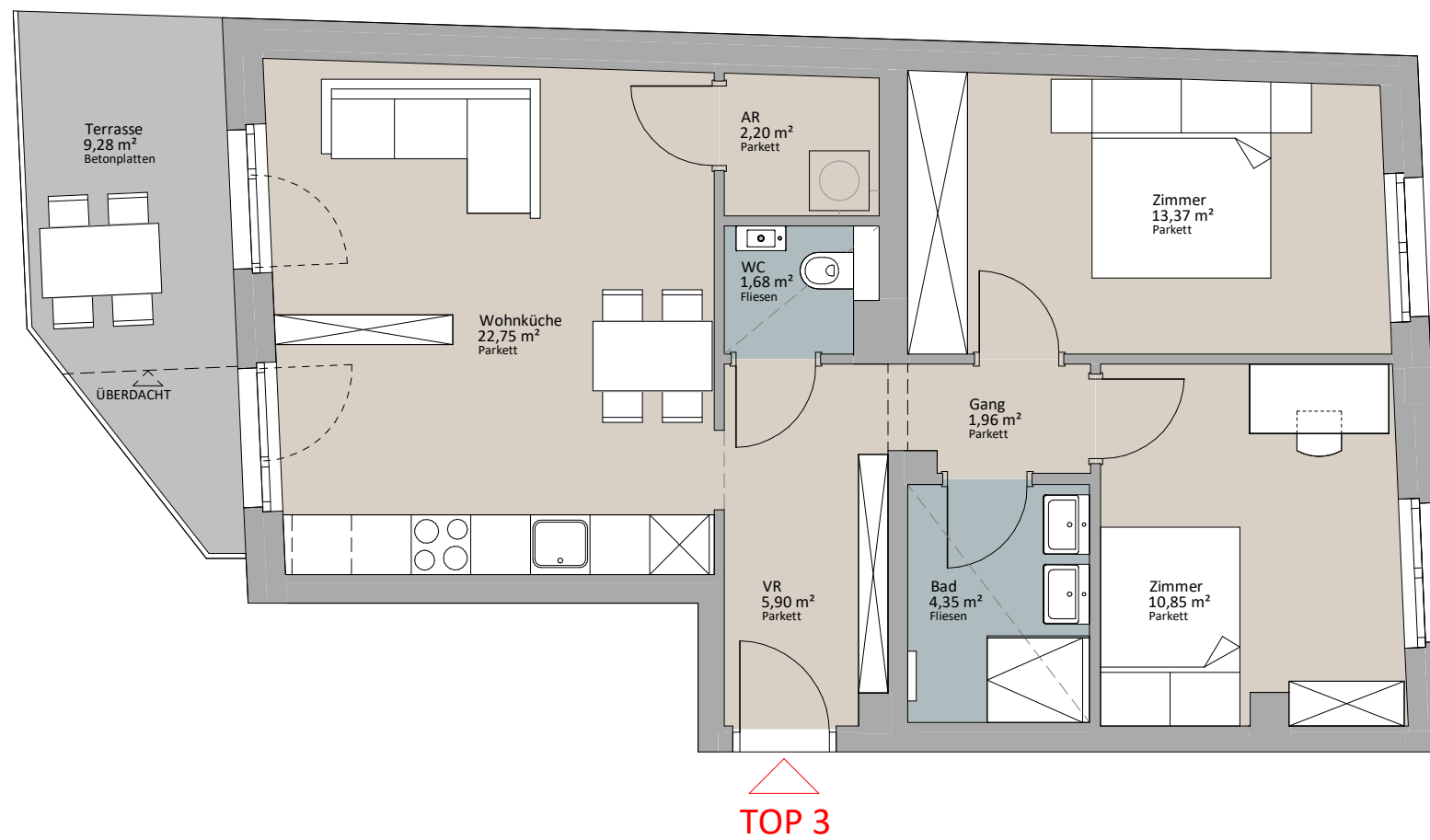


RAUCHGASSE

IGNAZGASSE

Erdgeschoss TOP 03

| | |
|-----------|----------------------|
| Zimmer | 13,37 m ² |
| Zimmer | 10,85 m ² |
| Wohnküche | 22,75 m ² |
| WC | 1,68 m ² |
| VR | 5,90 m ² |
| Gang | 1,96 m ² |
| Bad | 4,35 m ² |
| AR | 2,20 m ² |
| | 63,06 m ² |
| Terrasse | 9,28 m ² |
| | 9,28 m ² |



LAGEPLAN

